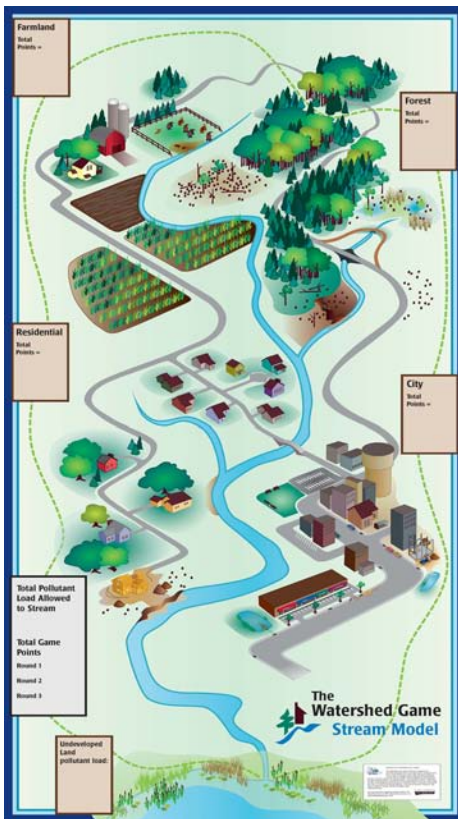


The WATERSHED GAME



The Watershed Game is an interactive tool that helps individuals understand the connection between land use and water quality. Participants learn how a variety of land uses impact water and natural resources, increase their knowledge of best management practices (BMPs), and learn how their choices can prevent adverse impacts. Participants apply plans, practices, and policies that help them achieve a water quality goal for a stream, lake, or river.

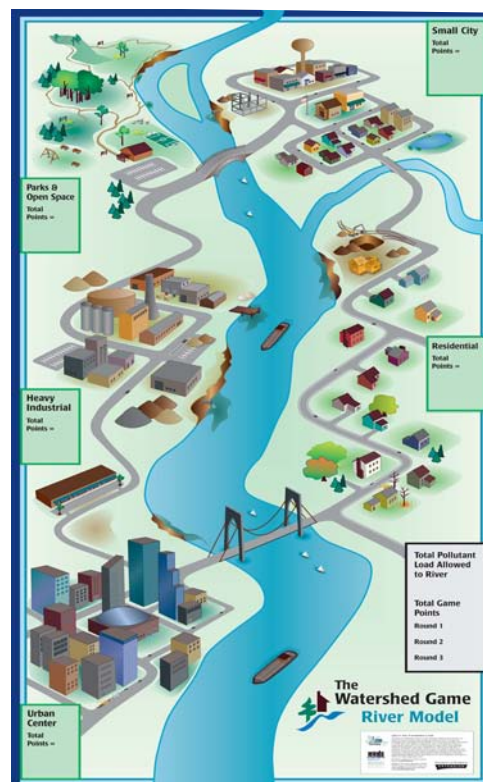
The Watershed Game is available in three versions. The **STREAM** version addresses an entire headwaters watershed and the land uses often found in it. The **RIVER** version addresses the land uses associated with large river systems and urban areas. The **LAKE** version is the newest addition to the Watershed Game focusing on the land uses surrounding a typical lake.



For maximum effectiveness, we recommend scheduling from 1 to 2 hours for the Watershed Game. This allows for a short introduction, 45 minutes of simulation or play, and follow-up discussions, presentations, and connections to local resources to encourage action. Often the Watershed Game is used as a component of a larger educational program; however it can be an effective stand-alone program.

Intended Audience

The Watershed Game was designed for use with elected and appointed officials, community leaders, watershed organizations, lake associations, and other adult audiences who have a role in developing plans, applying practices, or adopting policies integral to water resource management. Future adaptations may be made for student audiences.



Still have Questions?

Visit us at

www.northlandnemo.org

information about the Watershed Game can be

found under the **What We Do** tab

or **Contact:**

John Bilotta

Regional Extension Educator
Water Resource Management

(651) 480-7708

jbilotta@umn.edu

The **WATERSHED GAME**

Trained Watershed Game Facilitators

The Watershed Game provides a unique tool to simulate land use management and decisions required to meet water quality goals such as a TMDL (*Total Maximum Daily Load*). It requires facilitation by a trained individual. The Northland NEMO program has a number of trained facilitators who can help guide the Game. A [list of trained facilitators](#) can be found on the website. Additional training sessions for facilitators will be scheduled as needed.



Using or Getting the Watershed Game

The Watershed Game is available for loan to trained facilitators at no cost; however we require that facilitators submit a standardized use report so we can track where and how the tool has been used. [Locations of copies](#) of the Watershed Game available for loan are listed on the website. It is also available for purchase to organizations with trained facilitators.

About Northland NEMO

Northland NEMO is a [collaborative effort of organizations](#) (see website for list) in Minnesota and Wisconsin with educational programs that teach local leaders about the connections between land use and natural resource quality. Northland NEMO is a member of the National NEMO Network.

Acknowledgements

The Watershed Game was developed through Northland NEMO, a Minnesota-Wisconsin educational partnership. When using this tool, acknowledgment should be given to Northland NEMO, its various [financial partners](#), and the partners who authored its development.

